

Some examples...

Littleton Village Hall – were awarded £6,800 towards a project costing £11,957 to replace the staging and for redecoration

Garage Art Group – were awarded £5,000 towards a project costing £8,000 to project students artwork onto large screens and produce a DVD.

Sedgeberrow Parish Council - were awarded £11,500 towards a project costing £21,000 to install and update the Main Street play area.

Crowle Searchers FC – were awarded £1,000 towards the cost of a new storage facility (£2,570) for their ever growing club.

Vale of Evesham Camera Club – were awarded £500 towards the cost of a new motorised projector screen costing £1,250.

Worcestershire Early Music - Were awarded £2940 towards their project cost of £3925 to promote sessions music, dance and education leading up to a performance and production of a DVD.



WYCHAVON Community Grants Scheme 2012

£50,000 up for grabs by voluntary and charitable groups



Contact Tracy Grubb 01386 565168

tracy.grubb@wychavon.gov.uk

Tracy Grubb, Community Services, Wychavon District Council,
Civic Centre, Queen Elizabeth Drive, Pershore, Worcs, WR10 1PT.

WYCHAVON
DISTRICT COUNCIL
good services, good value

£50,000 up for grabs by voluntary and charitable groups

Every year the scheme focuses on one element of community life - this year's theme is the Olympics...

this does not exclude other aspects of community life, such as community buildings, sports, arts - in fact any project that benefits the community.

We want to ensure that community projects are sustainable and inclusive for all. This will mean more opportunities for the people of Wychavon today and a brighter outlook for the future.



Projects could include:

- Development of new and improved facilities or activities in their community run by local people. This could include:



- Village Hall activities / redecoration / refurbishment
- Youth Club set up / equipment/ activities
- Sports Club set up / projects / equipment
- Arts initiatives
- Play equipment / activities

Whatever your project is...the most important things are:

- It meets local needs and benefits local residents.
- It has community support.
- It is well planned and involves as many local people as possible.
- You can meet the full costs of the project through other grant aid and the groups own fund raising activities.
- The project is sustainable in the long term.

What is the aim of the grants scheme?

Grants are available to local voluntary groups and charitable organisations that aim to:

- Support initiatives that improve services and facilities for the local community.

- Encourage local action to improve quality of life.
- Support activities in the local community that the Council would like to, but does not have the resources for.
- Contribute towards the council's priorities, as set out in the community strategy or play strategy which can be found on the website at www.wychavon.gov.uk.

We particularly want to fund innovative, new projects that will make a lasting difference to the community and improve the quality of life in Wychavon.

Projects we have funded in the past include setting up youth groups, village hall refurbishment, arts initiatives and a wide range of sports projects.

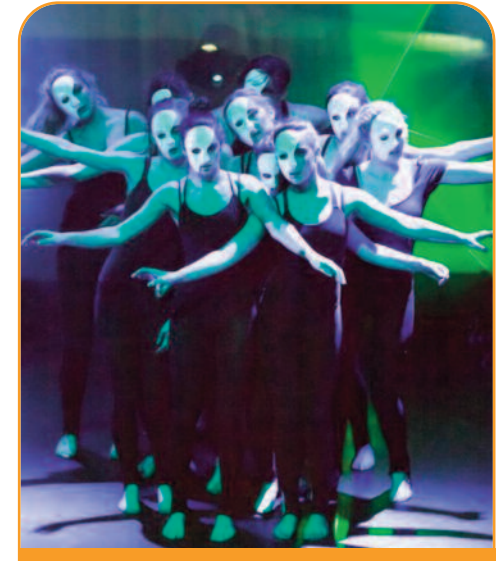
Who can apply?

To apply for a Wychavon Community Grant, follow these steps:

- 1. Choose your project.** It can be a one-off scheme with a distinct start and finish, sponsorship of an event or support for an ongoing initiative.
- 2. Fill in the forms.** Application pack is available from 3 January 2012.
- 3. Gather supporting information:** It is important that the following things are included in your application:
 - Evidence of local support and how it meets community needs.

- Audited, or independently verified, balance sheets and revenue accounts for the past two years. If these are not yet available please supply interim accounts or balance sheets.
- A copy of the organisation's rules and regulations and/ or constitution.
- Copies of estimates and budget relating to work which for which grant is sought.
- Where appropriate, plans of proposed work.

4 Submit your application: Make sure that the application is filled out fully and correctly and all of the supporting evidence is enclosed.



The closing date for all completed applications is **noon on Friday 30 March 2012**. No applications will be accepted after this date in any circumstances and incomplete applications will not be processed.